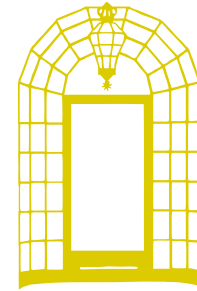




WATCHES

BVLGARI

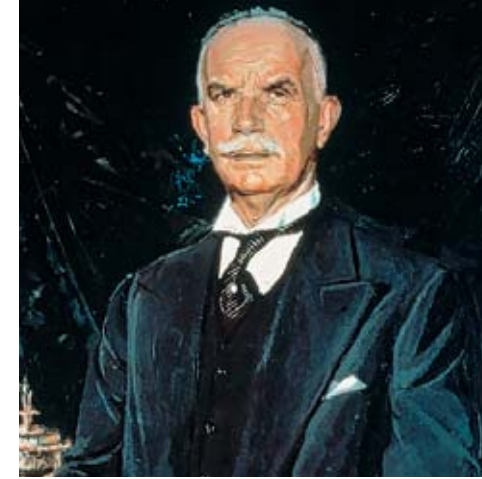


**2014** celebrates the 130<sup>th</sup> year of Bulgari, a name emblematic of Italian excellence. Inspired by 2,700 years of Roman history, Bulgari honors its rich past within modern designs. Known for stylistic audacity and a penchant for color, Bulgari pieces are immediately recognizable. The sensuality of volume, a love of linearity, and a reverence for the art and architecture of Bulgari's Greek and Roman roots are the iconic features found in each of Bulgari's creations. Ever in harmony with Rome's ancient history, Bulgari incorporates the city's symbolism while innovating the future of its design. From its origins in the flagship store on Via dei Condotti – one of the favorite meeting places for an international elite of artists, writers and actors during the 'Dolce Vita' years – to its role today as a diversified global player, the name Bulgari is synonymous with an inimitable vision of luxury. Classic yet contemporary, Bulgari upholds its 130-year legacy with a timeless sense of exquisite beauty.





The Bulgari flagship store  
at Via dei Condotti 10, Rome  
1934



## BVLGARI HISTORY

Finding its Roman beginnings as a jewelry shop, Bulgari was founded in 1884 by Greek silversmith Sotirio Bulgari. With passionate skill and vision, he set the stage for Bulgari to become a permanent emblem of Italian excellence. For the 130 years thereafter, Bulgari's ceaseless creativity, its formidable history of innovation, and a bold, pioneering spirit led the House to become legend.

2014 marks the 130<sup>th</sup> anniversary of Bulgari, a name that has become a byword for artisanal craftsmanship, avant-garde materials and unrivalled design. The Eternal City's architectural beauty has long inspired the Italian jeweler: Bulgari reinterprets the majestic symbols of Rome with extraordinary editions of jewelry, watches, accessories and perfumes.

As a reminder of its ancient Roman past, BVLGARI preserved the original Latin "V" epigraphy of the family name, engraving it above its flagship store in the grand renovation of 1934. Bulgari's Roman address on the prestigious Via dei Condotti, leading up to the Spanish Steps, became both its home and source of inspiration. Rome remains the aesthetic reference for Bulgari, as it boasts a spectacular architectural backdrop.

The brand came to the attention of the world elite during the flourishing Dolce Vita years – the 1950s-60s that featured such names as Elizabeth Taylor and Audrey Hepburn engaged in passionate affairs with Bulgari jewels. Immediately recognizable for their powerful opulence, rich colors and sense of volume, Bulgari jewels soon gained renown among the local bourgeois as well as the international high society set.

The Bulgari Group developed an overseas presence in the 1970s. It began as well to expand the company vision, diversifying into the world of watchmaking and launching the now-iconic “*Bulgari Bulgari*” watch in 1977. The coveted watch was just the firstborn of many, and in 1980 Bulgari founded the company Bulgari Time, in the watchmaking heart of Switzerland.

In 1993, Bulgari further diversified with the introduction of its first fragrance, *Eau Parfumée au Thé Vert*, establishing Bulgari Parfums in Switzerland. In 1996 Bulgari launched its highly successful collections of cosmopolitan accessories. In 2000, Bulgari Time’s capacities grew with the acquisition of specialized luxury watchmakers; Bulgari had now evolved into a world-class watch manufacturer. With its unmatched standard for a luxurious lifestyle, the Bulgari Group expanded its vision to hotels and resorts, featuring contemporary luxury in prestigious locations (Milan, Bali, London) via exclusive design. In 2011, Bulgari was acquired by LVMH (Louis Vuitton Moët Hennessy), further enriching its luxury potential.

Bulgari designs are deeply rooted in an inspired past. Refined Greek and Roman motifs honor this past by evoking the art and architecture of Bulgari’s origins. Proudly representing the exquisite beauty of Italy, the Bulgari name has become synonymous with brilliant color, symbolic storytelling, and peerless craftsmanship – for 130 years. In all things Bulgari, luxury is its legacy.



Interiors of the Bulgari flagship store  
at Via dei Condotti 10, Rome  
1934





The "Bulgari Bulgari"  
Solotempo watch



## ITALIAN MAGNIFICENCE

Genius and creativity, hand in hand, create what endures. From ancient Roman times to the present day, Italy has stood out for its creative genius, expressing itself in every area of human endeavour, from architecture and the fine arts to science and engineering. Over the centuries this Italian Genius has given us the sculptures of Imperial Rome, the masterpieces of the Renaissance, the astronomical theories of Galileo, the civil engineering projects, predictions and visionary machines of Leonardo da Vinci, all bearing witness to an incomparable spirit of innovation.

This Italian Genius subtly combines a pioneering spirit, a penchant for risk and a flair for audacity. However, this is insufficient in itself, for one must also add artisanal know-how and a boundless creativity: genius is born of *savoir-faire*, technology and passion. These are the values of the historic Italian figures who brought innovation to the world and forever changed our tomorrow.

Bulgari is a natural part of this heritage. Its roots are as firmly rooted in the history and spirit of ancient Rome as they are in the Italy of today. Reinterpreting Italian Genius on its own terms, Bulgari expresses it in countless ways, excelling in content as well as in form.

Bulgari timepieces are born of these Italian roots, blooming with magnificent complexity from the seeds of ingenuity. Following the success of the now iconic "Bulgari Bulgari" watch, first launched in 1977, the engraved BVLGARI BVLGARI logo was integrated as an important element of the design for the first time in any high-end watch, and for this distinction it remains famous. Equally



remarkable was the unprecedented volume of the cylindrical “*Bulgari Bulgari*” case – an apparently simple feature that is actually the result of meticulous architectural study. With such unique features, the “*Bulgari Bulgari*” watch marked the beginning of a new era of design that continues to this day. Bulgari design continues to seduce and astound with every passing year. From the distinctive octagonal shape of the *Octo* model to the clean contour of the *Diagono* case, Bulgari continues to grace beautiful, innovative timepieces with its inimitable signature style. But perhaps even more important than style is the time and care that underlies it: indeed, it takes craftsmen almost one full year to achieve the purity of form and performance that characterizes every Bulgari timepiece. Whether classical, complicated or sporty, every watch is a synthesis of elegance and innovation, with every feature contributing to the beauty of the whole. Contemporary ergonomic design and unparalleled performance combine with a daring juxtaposition of unusual materials like ceramic and rubber to make every creation a triumph of harmony. Making time for perfection, Bulgari timepieces define the genius of our today.



The Octo watch  
in pink gold





## THE BVLGARI ATELIER

Handcrafting the bridge of a mechanical movement, delicately carving the surface of a *champlevé* dial, patiently polishing the 110 facets of the *Octo* case... These are but three operations among the many dozens executed at Bulgari's production sites. Swiss locations in the watchmaking heart of Switzerland, have enabled Bulgari to enjoy the manufacturing capabilities necessary to construct its creations entirely in-house, the exclusive privilege of true players in the world of high-end watchmaking. Behind every *Haute Horlogerie* masterpiece lies a vast and complex network, wherein technology and manual dexterity are combined with passion to produce a perfectly oiled production process, of which Bulgari's extraordinary watches are the ultimate testimony.



## EXCELLENCE

Bulgari Horlogerie defines excellence with every timepiece it brings to life. Like the beating of a heart, expert watchmaking is intricate, complex and magical. A symphony of perfection, each of the hundreds of parts in a timepiece must operate in absolute harmony to bestow and preserve the life of the watch. Crafted by the specialized experts of the Bulgari Atelier, whether they are master watchmakers, stampers, dial-makers, precision mechanics or bevellers of handmade movements, each timepiece embodies the marriage of expertise and time. The interdependent execution of these operations takes several months to achieve, and in the case of the *Grandes Complications* watches, an entire year. With painstaking attention to detail, unmatched *savoir-faire*, and genuine passion, Bulgari craftsmen are proud to be recognized as the finest in the world.

Beginning as just an idea, the preliminary concept for a Bulgari watch triggers a complex development process for each of the components that comprise it. The manufacturing process begins with the heart of the watch: the mechanical movement. Most the hundreds of components must undergo machining, milling, bar turning and innumerable other procedures. Some of these pieces are almost invisible to the human eye, and must conform to tolerances within one thousandth of a millimetre. Many of these processes are mechanically executed, while countless others are done by hand. After the movement is created, the watch's construction is far from complete, for all the components must be meticulously fine-tuned before they are even assembled.

After the development process, the finished timepiece finally comes to life. The balance wheel, the true core of the watch, ticks its first movements, activating a system of perfectly synchronized components. The casing of the movement ensues, to both protect and beautify. Fashioned from precious metals, the case has also undergone a long series of processes in the Bulgari Atelier: from raw precious materials to the final sculpted casing, whose creation demands a combination of state-of-the-art skills and extreme precision. The dial, literally the expressive "face" of the timepiece, must conform to similarly detailed processes, and is of paramount importance.



The Bulgari Carillon Tourbillon





Expressions of a watch's uniqueness, Bulgari dials must be as distinctive and perfectly crafted as the internal mechanics. As such, Bulgari has resurrected the medieval *champlevé* technique for the elaborate dial of the moon phase on the *Diagono* watch. *Champlevé* enameling, or lacquering, is a delicate decorative art whereby one hollows out the metal, then fills it with enamel or lacquers, producing an aesthetic or functional purposes. Bulgari is known for honoring its Greek and Roman heritage, and it is also known for pursuing its quest for aesthetic beauty via unusual techniques. Each timepiece requires a considerable amount of time to become the living work of art that exemplifies Bulgari excellence, keeping time for a lifetime, with uncompromising perfection.

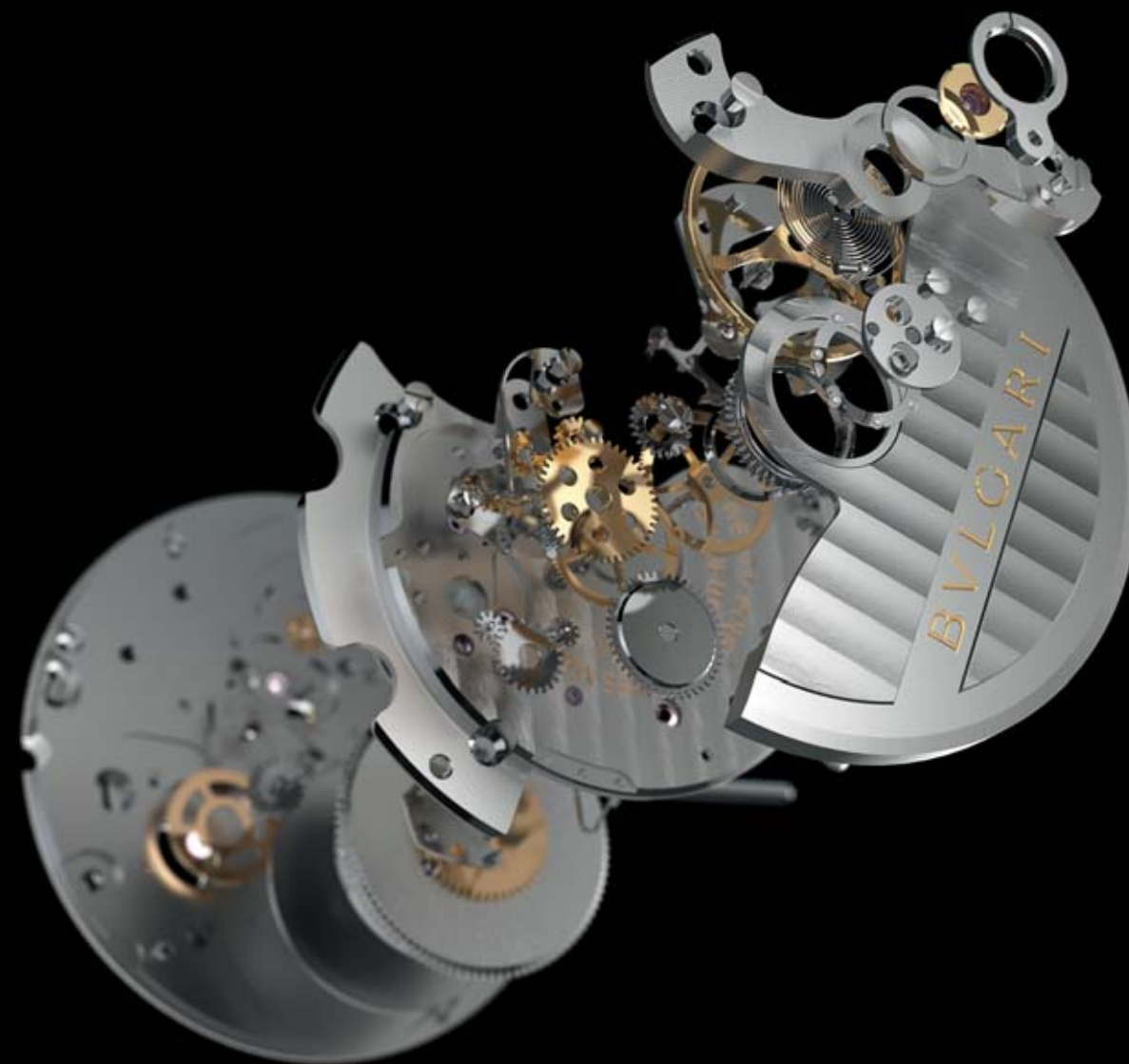


## *solotempo*

“Simplicity is the extreme sophistication,” noted Leonardo da Vinci, the polymath genius who was also known for his painstaking attention to detail. Creating a mechanical movement requires talent and ingenuity, a reality of the watch industry. Paradoxically, simplicity can be the most difficult quality to achieve successfully. Bulgari introduces the Solotempo caliber (BVL 191), a movement of complex simplicity.

The Bulgari Atelier is capable of producing some of the most complex watches on the planet, and this is because Bulgari knows that before one can paint a masterpiece, one must know to use the brush. The *Solotempo*, Italian for ‘only time’, reports the hour, minute, second and date with high performance and infallible precision. With its mastery of this caliber, revered for its singular purity, Bulgari makes it look simple. The Solotempo caliber (BVL 191), created in 2013, represents a new definition of accuracy, even for Bulgari. Conceived, developed and manufactured completely in-house, the Solotempo caliber (BVL 191) is an example of what happens when Swiss watchmaking *savoir-faire* is combined with Italian aesthetic genius.

The Solotempo caliber (BVL 191) mechanical movement is automatically wound by a ceramic wheel weight that oscillates on ceramic ball bearings. With an instant date changer, it also features a stop-seconds device to block the balance when the crown is pulled out. The expertly engineered caliber is equipped with a disconnecting system to avoid wear on the pinions, which also saves energy when the winding system is activated by the crown or the oscillating weight. Its constituent parts – mainplate, bridges and gearing train – are produced at the Bulgari Manufacture in La Chaux-de-Fonds, Switzerland, while final assembly takes place in Le Sentier at the Bulgari Manufacture de Haute Horlogerie. Masterminded by Bulgari’s finest industrial designers and engineers, the Solotempo caliber (BVL 191) is destined to play a central role in the Bulgari timepieces of the future. Epitomizing precision and high performance, the Solotempo caliber (BVL 191) keeps the tempo of perfect simplicity.







## GRANDES COMPLICATIONS

The *calibers*, or 'movements' of a mechanical watch are exquisite works of art unto themselves. This extraordinary assembly of components – up to a thousand in the most sophisticated complications – must be fitted into a space of a few cubic centimeters. Meanwhile, the watch's miniaturized motor must infallibly maintain the precise rhythm of time. Incredibly, this timekeeper can host a complex chiming device, a full calendar, even track the phases of the moon... yet it is above all a masterpiece of pure elegance on the wrist.

Executing such a complex piece of machinery is the pride and passion of Bulgari watchmakers. Engineers, mechanics, watchmakers, designers – these dexterous artisans have accumulated years of experience to become true masters of watchmaking *savoir-faire*.





## OCTO COLLECTION

History tells us of Italian artists of the 15<sup>th</sup> and 16<sup>th</sup> centuries such as Leonardo da Vinci, who created both innovative technological designs and artistic masterpieces. *Octo's* design embodies and celebrates such genius by combining its trademark octagonal shape inspired by the Basilica of Massentius in Rome, built in 310 AD, with manufacture movements crafted in Switzerland by Bulgari's master watchmakers. *Octo* is a timepiece that embodies the Bulgari man, who exudes personality, class and charisma and appreciates architectural design as much as the contemporary aesthetic. Breaking free of traditional conventions, the *Octo* Collection exists outside the sphere of classic *Haute Horlogerie*, fearlessly forging a new path. Its bold intersection of circle and square gives rise to an octagonal shape, delineating time in a complex yet perfect geometry. The eight sections of the case break with classicism while maintaining exquisitely calibrated proportions. As such, the highly structured case asserts its presence with clean, taut lines that convey its character and power. *Octo's* 110 separate facets are all meticulously worked by hand, with alternating polished and brushed finishes.

This year's *Octo Solotempo*, available with a 38 mm case with hour, minute, second and date display, represents the latest evolution of the collection. With peerless precision, the Solotempo caliber (BVL 191), invented in 2013 and manufactured entirely in-house, demonstrates how Bulgari expertise can make the complexity of keeping perfect time appear simple.

To further the scope of the *Octo* Collection, in 2014 Bulgari developed *Octo Velocissimo*, a 'speedy caliber' with a high-frequency chronograph. Housing a masterful Velocissimo caliber (BVL 328), the *Octo Velocissimo* is a convergence of perfect form, execution and beauty. With a heart that beats at ten vibrations per second, the soul of the movement lies in its flawless performance. As an integrated manufacture 3-compax chronograph with date display, the Velocissimo caliber (BVL 328) is a multitasking instrument of the highest refinement.

Available in steel or pink gold, *Octo* is the embodiment of absolute charisma.





#### OCTO SOLOTEMPO

Mechanical manufacture movement with automatic winding and instantaneous date, BVL 191 - Solotempo caliber decorated with côtes de Genève, anglage and colimaçonée finishing. Power reserve of 42 hours. Case in 18-kt pink gold, 38 mm, with transparent case back. Crown set with ceramic. Silvered dial with hand-applied indexes. Integrated alligator strap with 18-kt pink gold folding buckle. Water-resistant up to 100 meters. BGOP38WGDL

Mechanical manufacture movement with automatic winding and instantaneous date, BVL 191 - Solotempo caliber decorated with côtes de Genève, anglage and colimaçonée finishing. Power reserve of 42 hours. Steel case, 38 mm, with 18-kt pink gold crown set with ceramic and transparent case back. Silvered dial with hand-applied indexes. Steel and 18-kt pink gold bracelet. Water-resistant up to 100 meters. BGO38WSPGD



#### OCTO SOLOTEMPO

Mechanical manufacture movement with automatic winding and instantaneous date, BVL 191 - Solotempo caliber decorated with côtes de Genève, anglage and colimaçonée finishing. Power reserve of 42 hours. Steel case, 38 mm, with transparent case back. Crown set with ceramic. Lacquered polished dial with hand-applied indexes. Steel bracelet. Water-resistant up to 100 meters. BGO38BSSD

Mechanical manufacture movement with automatic winding and instantaneous date, BVL 191 - Solotempo caliber decorated with côtes de Genève, anglage and colimaçonée finishing. Power reserve of 42 hours. Steel case, 38 mm, with transparent case back. Crown set with ceramic. Lacquered polished dial with hand-applied indexes. Integrated alligator strap with stainless steel folding buckle. Water-resistant up to 100 meters. BGO38BSLD



### OCTO

Mechanical manufacture movement with automatic winding and date, BVL 193 caliber decorated with perlage, côtes de Genève and anglage finishing. Double barrel, 50 hour power reserve. Case in 18-kt pink gold, 41 mm, with transparent case back, crown set with ceramic. Lacquered dial with hand-applied indexes. Alligator strap with 18-kt pink gold folding buckle. Water-resistant up to 100 meters. BGOP41BGLD

Mechanical manufacture movement with automatic winding and date, BVL 193 caliber decorated with perlage, côtes de Genève and anglage finishing. Double barrel, 50 hour power reserve. Steel case, 41 mm, with transparent case back, 18-kt pink gold crown set with ceramic. Lacquered dial with hand-applied indexes. Integrated alligator strap with steel folding buckle. Water-resistant up to 100 meters. BGO41WSLD



### OCTO VELOCISSIMO

#### Integrated chronograph with column wheel mechanism

Mechanical manufacture high-frequency chronograph (5Hz) with silicon escapement, automatic winding and date, BVL 328 - Velocissimo caliber decorated with perlage, côtes de Genève and anglage finishing. Power reserve of 50 hours. Case in 18-kt pink gold, 41 mm, with transparent case back. Crown set with ceramic. Lacquered polished dial and hand-applied indexes. Integrated alligator strap with 18-kt pink gold folding buckle. Water-resistant up to 100 meters. BGOP41BGLDCH

Mechanical manufacture high-frequency chronograph (5Hz) with silicon escapement, automatic winding and date, BVL 328 - Velocissimo caliber decorated with perlage, côtes de Genève finishing. Power reserve of 50 hours. Steel case, 41 mm, with transparent case back. Crown set with ceramic. Lacquered polished dial and hand-applied indexes. Steel bracelet. Water-resistant up to 100 meters. BGO41BSSDCH





## OCTO MASERATI

The *Bulgari Octo Maserati* combines the values of emblematic excellence with two paragons of Italian style. The aesthetic refinement, performance and sporting spirit shared by these Italian powerhouses obtain their highest expression in their partnership, culminating in a timepiece of consummate technical sophistication. This limited edition *Bulgari Octo Maserati* captures the essence of two world-class Italian brands to become a collector's dream.

The symbiosis of two names of mechanical excellence produces the ultimate in aesthetic refinement. Performance is key to the 2014 *Octo Maserati*: the limited edition features a Velocissimo caliber (BVL 328), 3-compax high-frequency integrated chronograph with silicon escapement, a *champlevé* dial, a tachymetric bezel and a personalized sapphire on the back sporting the Maserati logo. *Octo Maserati* has been produced in only 1,914 units, to commemorate the year Maserati was founded.

### Integrated chronograph with column wheel mechanism

Mechanical manufacture high-frequency chronograph (5Hz) with silicon escapement, automatic winding and date, BVL 328 - Velocissimo caliber decorated with perlage, côtes de Genève finishing. Power reserve of 50 hours. Steel case, 41 mm, with tachymetric bezel and semi-transparent case back with Maserati logo and mention "1 OUT OF 1914". Crown set with ceramic. Lacquered polished dial executed with *champlevé* technique and hand-applied indexes. Integrated alligator strap with steel folding buckle. Water-resistant up to 100 meters. Limited edition. BGO41C3SLDCH/MAS





#### OCTO BI-RETRO

**Jumping hours, retrograde minutes (210°) and date (180°)**

Mechanical manufacture movement with automatic winding, GG 7722 caliber decorated with perlage, anglage and antique gold finishing. Power reserve of 45 hours. Steel case, 43 mm, with black ceramic bezel and transparent case back, crown set with ceramic cabochon. Lacquered dial executed with champlévé technique. Rubber strap with steel folding buckle. Water-resistant up to 100 meters. BGO43BSCVDBR

Mechanical manufacture movement with automatic winding, GG 7722 caliber decorated with perlage, anglage and antique gold finishing. Power reserve of 45 hours. Case in 18-kt pink gold, 43 mm, with transparent case back, crown set with onyx cabochon. Lacquered dial executed with champlévé technique. Alligator strap with 18-kt pink gold folding buckle. Water-resistant up to 100 meters. BGOP43BGLDBR



#### OCTO CHRONOGRAPHE QUADRI-RETRO

**Jumping hours, retrograde minutes (120°) and date (180°), integrated chronograph with column wheel and retrograde display (114°)**

Mechanical manufacture chronograph with automatic winding, GG 7800 caliber decorated with perlage, anglage and antique gold finishing. Quadri retrograde display. Power reserve of 38 hours. Steel case, 45 mm, with black ceramic bezel and transparent case back, crown set with ceramic cabochon. Lacquered dial executed with champlévé technique. Alligator strap with steel folding buckle. Water-resistant up to 100 meters. BGO45BSCLDCHQR

Mechanical manufacture chronograph with automatic winding, GG 7800 caliber decorated with perlage, anglage and antique gold finishing. Quadri retrograde display. Power reserve of 38 hours. Case in 18-kt pink gold, 45 mm, with transparent case back, crown set with onyx cabochon. Lacquered dial executed with champlévé technique. Alligator strap with 18-kt pink gold folding buckle. Water-resistant up to 100 meters. BGOP45BGLDCHQR







**OCTO FINISSIMO TOURBILLON**  
Platinum case, 40 mm, with transparent case back. Black lacquered dial. Alligator strap with platinum ardillon buckle. BGO40BPLTBXT



**OCTO FINISSIMO TOURBILLON**

The *Octo Finissimo Tourbillon* features the world's thinnest tourbillon movement of only 1.95 mm. Bulgari has pushed the limits of engineering, reducing the tourbillon cage to fit the space of this ultra-thin movement. Special ball bearings were developed to accommodate this calibre, nine in all, which made it possible to considerably decrease the surface needed for the bridges. With a manual winding movement and the finest decorations, the *Octo Finissimo Tourbillon* is cased in precious platinum just 5.00 mm thick. As elegant and contemporary as a watch can be.



**FINISSIMO BVL 268 CALIBER  
EXTRA-THIN FLYING TOURBILLON**  
Mechanical manufacture movement with manual winding. Extra-thin flying tourbillon, thickness of 1.95 mm. BVL 268 caliber decorated by hand with côtes de Genève and anglage finishing. Power reserve around 52 hours.





## OCTO FINISSIMO

“Details make perfection, and perfection is not a detail,” contended Leonardo da Vinci, the renowned perfectionist and master of countless disciplines. In the spirit of the great Renaissance inventor, engineer and artist, Bulgari designs watches of astounding ingenuity and sophistication. In designing the *Octo Finissimo*, manufactured in-house, Bulgari faced one of the most extreme challenges a watchmaker can undertake: the extreme miniaturization of parts that are already by definition extremely small. Using the “superfine” art of *Finissimo*, Bulgari developed the micro-components for the ultimate “black tie of watches.” *Octo Finissimo* features manual rewinding, a 65-hour power reserve, and a transparent case back that allows one to fully appreciate its fine complexity in action.



### FINISSIMO BVL 128 CALIBER EXTRA-THIN CALIBER WITH SMALL SECONDS AND BACK-SIDE POWER RESERVE INDICATION

Mechanical manufacture movement with manual winding, small seconds and back-side power reserve indication, thickness of 2.23 mm. BVL 128 caliber decorated by hand with côtes de Genève, anglage and perlage finishing. Power reserve around 65 hours.



### OCTO FINISSIMO

Extra-thin platinum case (40 mm diameter, 5.00 mm thick) with transparent case back. Crown set with ceramic. Black polished lacquered dial with raised indexes. Integrated alligator strap with platinum ardillon buckle. BGO40BPLXT



## ICONIC COLLECTIONS

With unmistakable distinction and unparalleled craftsmanship, the Iconic Collections are unequivocally Bulgari, embodying the soul of the brand. Inspired by the Bulgari heritage, they harness the avant-garde, redefining luxury and exemplifying contemporary Italian design.

Pioneers of brave ideas have only their predecessors to guide them. Defying convention and even the law, Italian scientist Galileo Galilei maintained that the Earth revolved around the sun. Today, he is heralded as the 'father of science', a bold example of the Italian ingenuity that lives on to this day. Like Galileo, Bulgari has always marched to the beat of its own drum, and is beloved for the brilliance and singularity of character that make its watches among the finest in the world.

Within the Iconic Collections, every detail expresses inimitable refinement. The innovative combinations of materials, the generous, balanced volumes, the mechanical expertise – Bulgari timepieces embody the strength of the family name. The “*Bulgari Bulgari*” Collection, an emblematic favorite for over three decades, is the venerable ancestor that once caused a stir with the unprecedented use of the logo as an element of design. Born as BVLGARI ROMA in 1975, the “*Bulgari Bulgari*” Collection draws its inspiration from imperial Roman coins on which the emperor’s name was engraved along the rim, leaving the center free for his portrait. The result: a contemporary expression of Roman splendor and its measure of wealth. The “*Bulgari Bulgari*” Collection has evolved to incorporate a sleeker design, a curved case and an integrated strap, while the new in-house Solotempo caliber (BVL 191) and Velocissimo caliber (BVL 328) high-frequency chronograph represent the high-performance heart of the collection. Those who wear a “*Bulgari Bulgari*” watch become ambassadors of the Bulgari family name, a part of the Bulgari tradition of luxury, quality and the finest Italian design.

Within the *Diagono* Collection, originality reigns with a unique combination of materials, stylistic details and bold chromatic accents. *Diagono* watches capture the dynamism of high performance, ticking to the perfect rhythm of Swiss watchmaking quality. The characteristic BVLGARI BVLGARI double logo encircles the *Diagono* watch face, a contemporary variation on the original created in 1988. Deriving from the ancient Greek word *Agôn* (meaning ‘competition’), *Diagono*’s sporty style keeps time like a winner.





#### **BVLGARI BVLGARI SOLOTEMPO**

Mechanical manufacture movement with automatic winding and instantaneous date, BVL 191 - Solotempo caliber decorated with côtes de Genève, anglage and colimaçonée finishing. Power reserve of 42 hours. Case in 18-kt pink gold, 39 mm, with transparent case back. Crown set with ceramic. Lacquered polished dial with hand-applied indexes. Integrated alligator strap with 18-kt pink gold ardillon buckle. BBP39WGLD

Mechanical manufacture movement with automatic winding and instantaneous date, BVL 191 - Solotempo caliber decorated with côtes de Genève, anglage and colimaçonée finishing. Power reserve of 42 hours. Steel case, 41 mm, with 18-kt pink gold bezel and transparent case back, 18-kt pink gold crown set with ceramic. Lacquered polished dial with hand-applied indexes. Steel and 18-kt pink gold bracelet. BB41WSPGD



#### **BVLGARI BVLGARI SOLOTEMPO**

Mechanical manufacture movement with automatic winding and instantaneous date, BVL 191 - Solotempo caliber decorated with côtes de Genève, anglage and colimaçonée finishing. Power reserve of 42 hours. Steel case, 41 mm, with transparent case back. Crown set with ceramic. Lacquered polished dial with hand-applied indexes. Integrated alligator strap with stainless steel folding buckle. BB41BSLD

Mechanical manufacture movement with automatic winding and instantaneous date, BVL 191 - Solotempo caliber decorated with côtes de Genève, anglage and colimaçonée finishing. Power reserve of 42 hours. Steel case, 41 mm, with transparent case back. Crown set with ceramic. Lacquered polished dial with hand-applied indexes. Steel bracelet. BB41WSSD



#### **BVLGARI BVLGARI VELOCISSIMO**

##### **Integrated chronograph with column wheel mechanism**

Mechanical manufacture high-frequency chronograph (5Hz) with silicon escapement, automatic winding and date, BVL 328 - Velocissimo caliber decorated with perlage, côtes de Genève finishing. Power reserve of 50 hours. Case in 18-kt pink gold, 41 mm, with transparent case back. Crown set with ceramic. Lacquered polished dial with Super-LumiNova® and hand-applied indexes. Integrated alligator strap with 18-kt pink gold ardillon buckle. BBP41BGLDCH



#### **BVLGARI BVLGARI VELOCISSIMO**

##### **Integrated chronograph with column wheel mechanism**

Mechanical manufacture high-frequency chronograph (5Hz) with silicon escapement, automatic winding and date, BVL 328 - Velocissimo caliber decorated with perlage, côtes de Genève finishing. Power reserve of 50 hours. Steel case, 41 mm, with transparent case back and 18-kt pink gold bezel, crown set with ceramic. Lacquered polished dial with Super-LumiNova® and hand-applied indexes. Steel and 18-kt pink gold bracelet. BB41BSPGDCH

Mechanical manufacture high-frequency chronograph (5Hz) with silicon escapement, automatic winding and date, BVL 328 - Velocissimo caliber decorated with perlage, côtes de Genève finishing. Power reserve of 50 hours. Steel case, 41 mm, with transparent case back. Lacquered polished dial with Super-LumiNova® and hand-applied indexes. Steel bracelet. BB41BSSDCH





### BVLGARI ROMA

In the 70's, a happy accident rallied a devoted clientele, which in turn led to an expansion of the Bulgari vision. When the first 1975 BVLGARI ROMA watch was produced as a limited series of 100, intended as special gifts for Bulgari clients, it set off a wildfire of demand, thus inspiring the launch of the now iconic “Bulgari Bulgari” wristwatch, which was a resounding success. The rest is watchmaking history.

In 2014, for its 130<sup>th</sup> anniversary, Bulgari introduces a tribute to its paternal originator with three limited edition watches, of only 130 pieces each. Every watch is numbered and engraved for individuality and authenticity and features artisanal finishings, a hand-polished strap, a BVL 131M movement, manual winding, three days of power reserve and double barrels. And for the crowning touch, the BVLGARI ROMA logo encircling the bezel, taking this magnificent new limited edition back full circle to the original.

Mechanical manufacture movement with manual winding, BVL 131M caliber decorated with perlage, côtes de Genève and anglage finishing. Double barrel, 72 hour power reserve. Case in 18-kt pink gold, 39 mm, with transparent case back. Lacquered polished dial with hand-applied indexes. Alligator strap with 18-kt pink gold ardillon buckle. Limited edition of 130 pieces with collector number engraved on the case side. BBP39BGL/ROMA

Mechanical manufacture movement with manual winding, BVL 131M caliber decorated with perlage, côtes de Genève and anglage finishing. Double barrel, 72 hour power reserve. Case in 18-kt pink gold, 39 mm, with transparent case back. Lacquered polished dial with hand-applied indexes. Alligator strap with 18-kt pink gold ardillon buckle. Limited edition of 130 pieces with collector number engraved on the case side. BBP39WGL/ROMA



## BVLGARI BVLGARI TOURBILLON

Featuring one of the most elaborate *Grandes Complications* movements that a master watchmaker can create, the “Bulgari Bulgari” Tourbillon is a unique combination of high-end technical expertise and contemporary Italian design. Distinctive yet classic, the design is as timeless as its functionality is perfect. Because of the complexity of its miniaturized mechanisms and extremely small size, the BB Tourbillon watch is a marvel of watchmaking skill. The BB Tourbillon’s cage bridge is made of sapphire to ensure optimal viewing of the exquisite tourbillon at work.

### Tourbillon with sapphire bridge

Mechanical manufacture movement with automatic winding, BVL 263 caliber with see-through tourbillon. Power reserve of 64 hours. Case in 18-kt pink gold, 41 mm, with transparent case back. Alligator strap with 18-kt pink gold folding buckle. BBP41BGLTB







#### DIAGONO CERAMIC

Mechanical movement with automatic winding and date, B77 caliber. Steel case, 42 mm, with black ceramic bezel. Steel and black ceramic crown. Silvered dial, hand-applied indexes with Super-LumiNova®. Rubber and steel strap with steel ardillon buckle. Water-resistant up to 100 meters. DG42C6SCVD

Mechanical movement with automatic winding and date, B77 caliber. Steel case, 42 mm, with black ceramic bezel. Steel and black ceramic crown. Black dial, hand-applied indexes with Super-LumiNova®. Rubber and steel strap with steel ardillon buckle. Water-resistant up to 100 meters. DG42BSCVD



#### DIAGONO CERAMIC CHRONOGRAPHE

Mechanical chronograph with automatic winding and date, B130 caliber. Power reserve of 42 hours. Case in 18-kt pink gold, 42 mm, with black ceramic bezel. Crown in 18-kt pink gold and black ceramic, with black ceramic push-buttons. Black dial and hand-applied pink gold-plated indexes with Super-LumiNova®. Rubber and 18-kt pink gold strap with 18-kt pink gold ardillon buckle. Water-resistant up to 100 meters. DGP42BGCVDCH

Mechanical chronograph with automatic winding and date, B130 caliber. Power reserve of 42 hours. Steel case, 42 mm, with black ceramic bezel. Steel and black ceramic crown and black ceramic push-buttons. Black dial and hand-applied indexes with Super-LumiNova®. Rubber and steel strap with steel ardillon buckle. Water-resistant up to 100 meters. DG42BSCVDCH



#### DIAGONO ULTRANERO CHRONOGRAPHE

Mechanical chronograph with automatic winding and date, B130 caliber. Power reserve of 42 hours. Steel case, 42 mm, with black Diamond Like Carbon treatment and black ceramic bezel. Steel and black ceramic crown and steel push-buttons. Black dial and hand-applied indexes with Super-LumiNova®. Rubber and steel strap with steel ardillon buckle. Water-resistant up to 100 meters. DG42BBSCVDCH

Mechanical chronograph with automatic winding and date, B130 caliber. Power reserve of 42 hours. Steel case, 42 mm, with black Diamond Like Carbon treatment and 18-kt pink gold bezel. Crown in 18-kt pink gold and black ceramic, with black ceramic push-buttons. Black dial and hand-applied pink gold-plated indexes with Super-LumiNova®. Rubber and steel strap with steel ardillon buckle, both treated with Diamond Like Carbon. Water-resistant up to 100 meters. DG42BBSPGVDCH



#### DIAGONO ULTRANERO CHRONOGRAPHE

Mechanical chronograph with automatic winding and date, B130 caliber. Power reserve of 42 hours. Steel case, 42 mm, with black Diamond Like Carbon treatment and black ceramic bezel. Steel and black ceramic crown and steel push-buttons. Black dial and hand-applied indexes with Super-LumiNova®. Red chronograph counters figures and second track. Rubber and steel strap with steel ardillon buckle. Water-resistant up to 100 meters. DG42BBSCVDCH/1

Mechanical chronograph with automatic winding and date, B130 caliber. Power reserve of 42 hours. Steel case, 42 mm, with black Diamond Like Carbon treatment and black ceramic bezel. Steel and black ceramic crown and steel push-buttons. Black dial and hand-applied indexes with Super-LumiNova®. Yellow chronograph counters figures and second track. Rubber and steel strap with steel ardillon buckle. Water-resistant up to 100 meters. DG42BBSCVDCH/2





#### DIAGONO CALIBRO 303

The *Diagono Calibro 303* – named for the 303 parts that compose the movement – is an icon of innovative design and aesthetic beauty. With its classic double logo engraved on the bezel, the large screws cut parallel to the lugs, and the extreme legibility of the dial, the *Diagono* Collection asserts itself immediately as an aesthetic masterpiece of the watchmaker's art. At the heart of this precise instrument lies a sophisticated activation system that engages its chronograph functions. Operated by a column wheel, a vertical pinion clutch prevents skipping, ensuring infallible smoothness during the chronograph's start, stop and reset operations.

#### Integrated chronograph with column wheel mechanism

Mechanical manufacture chronograph with automatic winding and date, BVL 303 caliber decorated with perlage, côtes de Genève and anglage finishing. Power reserve of 40 hours. Steel case, 42 mm, with 18-kt pink gold bezel and transparent case back. Multi-layer dial with gaudronné pattern, azuré counters and hand-applied indexes with Super-LumiNova®. Alligator strap with steel folding buckle. Water-resistant up to 100 meters. DG42C6SPGLDCH

Mechanical manufacture chronograph with automatic winding and date, BVL 303 caliber decorated with perlage, côtes de Genève and anglage finishing. Power reserve of 40 hours. Steel case, 42 mm, with transparent case back. Multi-layer dial with gaudronné pattern, azuré counters and hand-applied indexes with Super-LumiNova®. Steel bracelet. Water-resistant up to 100 meters. DG42BSSDCH



## DIAGONO PHASES DE LUNE

With celestial elegance, the new *Diagono Moonphase* descends upon the watch aficionados of the world, exemplifying perfect beauty. With a unique patented display that tracks the lunar cycle as it waxes and wanes, this innovative Bulgari mechanism is completely designed and developed in-house. The dial's exquisite decoration, using the ancient *champlevé* technique, lends it a sculptural originality. The final hand-polishing of the moons is executed with the utmost expertise, leaving the *Moonphase* timepiece to glow with refinement.

### Retrograde day and date (150°) with patented moonphase indication

Mechanical manufacture movement with automatic winding, BVL 347 caliber decorated with perlage, côtes de Genève and anglage finishing. Power reserve of 44 hours. Case in 18-kt pink gold, 42 mm, with transparent sapphire case back. Lacquered dial executed with *champlevé* technique. Alligator strap with 18-kt pink gold folding buckle. Limited edition of 199 pieces engraved on the case side. DGP42BGLDMP/N







## COMPLICATIONS

The exquisitely detailed nature of watchmaking makes true artists of those who have mastered it. Bulgari watchmakers are among the rare elite who are able to realize the ultra-complex timepieces that now define the brand. Chiming watches, Tourbillons, Perpetual Calendars, watches that track the phases of the moon... these are just a few of the elaborate *complications* that are the pride and joy of a master watchmaker. Furthermore, Bulgari has the coveted capacity to create all its watch components completely in-house, from conception and development to production and assembly, making it possible to offer what is probably the widest range of complication typologies on the market. Each component is assembled, adjusted and decorated entirely by hand. Experienced master watchmakers dedicate approximately one year to complete a single *Grandes Complications* watch, which is understandable when one considers that the *Bulgari Grande Sonnerie Quantième Perpétuel* movement, to name one example, is comprised of nearly 1,000 components. As the symbol and culmination of Bulgari expertise, the *Grandes Complications* watches combine the company's rich history, unparalleled skill and pioneering technology with the bold vision that has always distinguished its name.

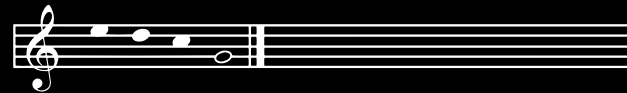
One of the most complex wristwatch complications to create is the chime. Equipped with 2, 3 or 4 hammers, the chime mechanism requires a vast amount of experience to execute: in order to obtain the right sound, pure and crystalline, the watchmaker must manually adjust the gongs over the course of several steps, filing and shortening the steel filaments until each is tuned to the perfect pitch. The 4-gong *Grande Sonnerie* timepieces, produced in-house at the Bulgari Haute Horlogerie workshop in Le Sentier, are able to chime the same melody as Big Ben at the Palace of Westminster. In this same vein is the *L'Ammiraglio del Tempo* Minute Repeater movement, which in addition to chiming the hour on demand, contains an extraordinarily complex *Détente Escapement*, inspired by the *Marine Chronometers* of the past.

Beyond the magic of melody, some of the most elegant expressions of Bulgari Horlogerie are visual. A case in point is the original *retrograde* dial: when it reaches the end of a predefined section of time, the dial jumps back to start again. Alternatively, the patented *papillon* complication is a complex mechanism capable of displaying a measure of time on one portion of the dial. Featuring two bright retractable arrows mounted on a rotating wheel, the dials resemble two butterfly wings that appear to dance in time. Having also mastered the notorious complexity of the *tourbillon* movement, a sophisticated invention that facilitates accuracy, Bulgari has proven itself the artisanal master of its craft.



## CHIMING

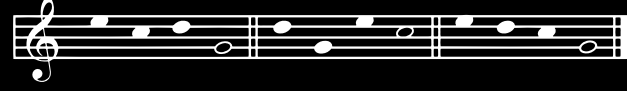
1<sup>st</sup> quarter



2<sup>nd</sup> quarter



3<sup>rd</sup> quarter



A magical compendium of mechanical ingenuity, technique and history, Bulgari's chiming watches constitute a rare specialty, realized only by the most elite of watchmakers. Transforming the passage of time into audible sounds is a highly complex art, and is considered a watchmaker's greatest achievement. Very few will ever attempt to create such a melodic masterpiece, yet Bulgari master watchmakers at the Le Sentier workshop handcraft them entirely in-house. *Carillon* watches chime two or more gongs, while Bulgari Grande Sonnerie watches have four that play the Westminster Quarters, the melody sounded by Big Ben. Peerless in the world of horology, Bulgari's chiming timepieces sing the praises of Bulgari *savoir-faire*.







## L'AMMIRAGLIO DEL TEMPO

Inspired by the heritage of naval and chiming watches, Bulgari introduced *L'Ammiraglio del Tempo* which combines the utmost expertise in chiming watches and Haute Horlogerie. This complex new movement has become the “admiral of time” for watch aficionados.

During the XVIII century, European fleets were competing for trade supremacy on the seas. Precise timekeepers called marine chronometers had been developed by the most famous watchmakers of that time in order to help sailors to precisely determine the longitudinal location of their ships. These navigation instruments used a special regulator device called a *détente*. The miniaturisation of this low-frequency escapement, just 2Hz, was made possible by the addition of a constant-force mechanism. *L'Ammiraglio del Tempo* is the only wrist watch that combines two highly exclusive mechanisms: the *Détente Escapement* and *Minute Repeater*. The four gongs and hammers reproduce the famous melody of the Westminster carillon.



DR 7301 CALIBER  
MINUTE REPEATER, CARILLON WESTMINSTER, 4 HAMMERS AND CATHEDRAL GONGS,  
DETENTE ESCAPEMENT, CONSTANT FORCE, CYLINDRICAL BALANCE SPRING  
Mechanical manufacture movement with manual winding, DR 7301 caliber, haut de gamme  
finishing. Power reserve of 48 hours.

## DANIEL ROTH L'AMMIRAGLIO DEL TEMPO

Case in 18-kt white gold, 50 mm, with transparent case back. Gold dial with champlévé indexes. Minute repeater mysterious activation. Alligator strap with 18-kt white gold folding buckle. Limited edition of 10 pieces. BRRW50C3GLMRED





#### DANIEL ROTH CARILLON TOURBILLON

Case in 18-kt white gold, 48 mm, with transparent case back. Alligator strap with 18-kt white gold folding buckle. Limited edition of 30 pieces. BRRW48GLTBMR



#### DANIEL ROTH CARILLON TOURBILLON

A chiming watch of the prestigious *carillon* variety must incorporate more than two hammers; the Carillon Tourbillon chimes with three. The architecture of this timepiece with its complex tourbillon movement, the delicately cut shape of the bridges, and the positioning of its 327 components strike a fine contrast to its slender beauty. The 75-hour power reserve display of the manual winding caliber is visible through the back of the case.



#### DR 3300 CALIBER

CARILLON THREE HAMMERS AND GONGS, MINUTE REPEATER, TOURBILLON  
Mechanical manufacture movement with manual winding, DR 3300 caliber decorated by hand. Power reserve indication on the reverse side of the movement. Power reserve of 75 hours.





**DANIEL ROTH  
GRANDE SONNERIE QUANTIEME PERPETUEL**

The movement of a Grande Sonnerie Carillon Westminster watch is already extremely complex in itself, yet this piece takes it one step further. Incorporating the entirety of its *savoir-faire*, Bulgari has incorporated a perpetual calendar and tourbillon into the timepiece, redefining the boundaries of horology. From manufacture to assembly of its 923 parts, it will take a master watchmaker over one year to complete this exceptional movement.



**DR 5307 CALIBER**

GRANDE SONNERIE, PERPETUAL CALENDAR, TOURBILLON MOVEMENT, WESTMINSTER CHIME, GRAND AND LITTLE STRIKE ON FOUR GONGS, MINUTE REPEATER, MOONPHASES, POWER RESERVE INDICATIONS

Mechanical manufacture movement with automatic winding, DR 5307 caliber entirely decorated by hand with côtes de Genève and anglage finishing. Power reserve of 48 hours for the movement and 24 hours for the striking mechanism shown on two separate displays. Selectors on the sides of the crown for the Grand & Little and Chimes & Silence modes decorated with black sapphire discs.



**DANIEL ROTH GRANDE SONNERIE QUANTIEME PERPETUEL**

Case in 18-kt pink gold, 48 mm, with transparent case back. Unique gold dial with multi-layer construction, lacquered finishing and sapphire discs. Alligator strap with 18-kt pink gold folding buckle. Unique piece. BRRP48GLTBGSQP/2





**MAGSONIC®**

The 51 mm case with Magsonic® middle case is framed on either side by a bezel and back in 18-kt pink gold, secured from outside by means of specially designed pillars. Transparent case back. Patented construction. Skeletonized 18-kt pink gold dial. Alligator strap with 18-kt pink gold folding buckle. BGGP51GLTBGS



**MAGSONIC®**

This exquisite timepiece features a bezel and caseback of solid gold, integrated with a cylindrical band made of Magsonic, a unique low-density alloy. Magsonic® works with the patented construction of the case to ensure the optimal amplification of its four-hammer Westminster chime. The cross-shaped pushbutton activates the minute repeater, the pivoting ridged function selectors on each side select grand or small chime, chime or silent modes.



GG 31001 CALIBER  
GRANDE SONNERIE TOURBILLON MOVEMENT, WESTMINSTER CHIME, GRAND AND LITTLE STRIKE ON FOUR GONGS, MINUTE REPEATER, OFF-CENTRED HOURS AND MINUTES  
Mechanical manufacture movement with manual winding, GG 31001 caliber entirely decorated by hand with perlage finishing and engraved wave pattern. Power reserve of 48 hours for the movement and 24 hours for the striking mechanism shown on 2 separate displays on the case back.





## COMMEDIA DELL'ARTE

Inspired by the lively history of Italian theater, Bulgari created *La Commedia Dell'Arte*. This traditional comic genre used masked actors to represent various stereotypical characters. *La Commedia Dell'Arte* would perform nomadic, outdoor improvisational theatre that quickly spread across 16<sup>th</sup>-century European courts. To honor this artistic predecessor, Bulgari designed a limited edition *Commedia Dell'Arte* Collection, with each model limited to only eight pieces, creating meticulously hand-decorated dials with *peinture miniature*, *gravure* and *ciselage* techniques. Set against a typical Italian landscape such as the Bridge of Sighs in Venice, the towers of Bologna or the Bay of Naples, five famous characters perform music, sing and even move when the minute repeater is activated by the unique automaton function.



### BVL 618 CALIBER

#### AUTOMATON WITH MINUTE REPEATER AND CATHEDRAL GONGS

Mechanical manufacture movement with manual winding, BVL 618 caliber. Automaton function with various animated parts visible on the dial, starting with the minute repeater activation. Power reserve of 48 hours.



### COMMEDIA DELL'ARTE

Magsonic® middle case, 54 mm, in 18-kt gold, framed on either side by a bezel and back in 18-kt white gold, secured from outside by means of specially designed pillars. Transparent case back. Patented construction. 18-kt gold dial hand-decorated with *peinture miniature*, *gravure* and *ciselage* techniques. Depiction of a typical Italian palace from the 16<sup>th</sup> century with a view of Mount Vesuvius and the Bay of Naples. Five famous characters of the *Commedia dell'Arte* are playing music and singing. Alligator strap with 18-kt white gold folding buckle. Limited edition of 8 pieces. BGGW54GLCA/PU





**DANIEL ROTH IL GIOCATORE VENEZIANO**

Case in 18-kt pink gold, 46 mm, with transparent case back. Unique hand-painted 18-kt gold dial. Alligator strap with 18-kt pink gold folding buckle. Unique piece. BRRP46GLGV/12



**DANIEL ROTH  
IL GIOCATORE VENEZIANO**

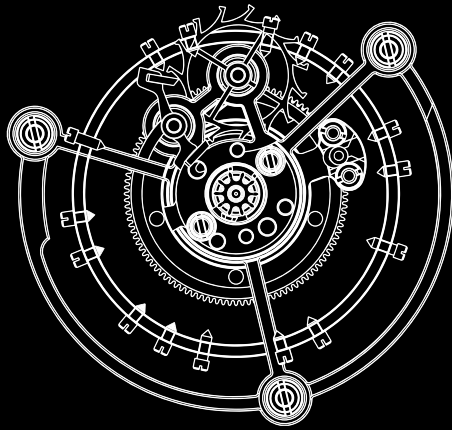
Inspired by a 16<sup>th</sup>-century Venetian painting, the watch's manually engraved dial and hand-painted face are enlivened by a mechanical dice player, with his flickering candle that poetically changes color. Activating the minute repeater causes the player to raise and lower his arms, alternately revealing or concealing the dice. Providing the closet gambler with charming entertainment, the player displays a new random roll of the dice with 504 combinations, a matchless and exquisite example of the finest watchmaking.



**DR 7300 CALIBER**  
**AUTOMATON WITH 504 COMBINATIONS AND MINUTE REPEATER**  
Mechanical manufacture movement with manual winding, DR 7300 caliber. Five different animations visible on the dial. Power reserve of 45 hours.



## TOURBILLON



An ingenious invention from the 19<sup>th</sup> century, the *tourbillon* movement is still revered for its beauty and enjoyed for its practicality. Greatly improving the accuracy of mechanical watches, it was revolutionary in the world of horology – the mechanism can counter and distribute the effects of gravity that formerly hindered accurate timekeeping. History tells of the first tourbillon mechanism produced for Napoleon's travel carriage clock (which weighed almost 90 kilos). Considered to be one of the most challenging of watch mechanisms to create, it is still valued for its engineering and design principles. Due to its complexity and extremely small size, the ability to make a functioning tourbillon represents a pinnacle of the watchmaker's art.







### TOURBILLON SAPHIR

With stunning originality, this timepiece's distinctive construction uses actual sapphire crystal for the bridges and case sides. Its transparency is further enhanced by luminescence: Super-LumiNova® pigments fill special tubes crossing through the sapphire crystal case middle and represent the hour-marker dots on the inner bezel ring. This luminous effect is also used for the arrow tips of the skeletonized hands, increasing legibility.



**GG 8000 CALIBER**  
**SKELETONIZED TOURBILLON WITH SAPPHIRE BRIDGES**  
 Mechanical manufacture movement with manual winding, GG 8000 caliber. Power reserve of 72 hours.



### TOURBILLON SAPHIR

Case in 18-kt pink gold, 53 mm, secured from outside by means of specially designed pillars. Middle case in sapphire crystal with columns filled with Super-LumiNova®. Transparent case back. Patented construction. Sapphire crystal dial. Alligator strap with 18-kt pink gold folding buckle. Limited edition of 25 pieces. BGGP53GLTBSK





**DANIEL ROTH TOURBILLON LUMIERE**

Case in 18-kt pink gold, 44 mm, with transparent case back. Manufacture caliber with hand-hammering decoration. Alligator strap with ardillon buckle. BRRP44GLTBSK



**DANIEL ROTH  
TOURBILLON LUMIERE**

The painstaking manual decoration and finishing for the *Tourbillon Lumière* requires six weeks of meticulous labor alone. Bulgari's artisanal passion is expressed through delicate re-entrant angles and hand-hammered finishing on its pink gold plate and bridges. Such exquisite craftsmanship means that no two watches will ever be the same. Just enough gleaming precious metal is left alone to accommodate a view of the power reserve display on the back.



DR 780 CALIBER  
TOURBILLON, SKELETONIZED MOVEMENT ENTIRELY DECORATED BY HAND AND  
POWER RESERVE INDICATION  
Mechanical manufacture movement with manual winding, DR 780 caliber, openworked  
pink gold main plate and bridges with hand-hammered decoration and re-entrant angles.  
Power reserve of 64 hours indicated on the reverse side of the movement.





# **DANIEL ROTH TOURBILLON RATTRAPANTE**

Offering the original and indeed rare combination of a split-second column-wheel chronograph and a tourbillon, this model pairs cutting-edge manufacturing techniques with time-tested horological tradition. The split-second complication, called *rattrapante* in French, is a particularly sophisticated function, useful for the simultaneous measurement of several short intervals.



**DR 8300 CALIBER**  
TOURBILLON, CHRONOGRAPH WITH RATTRAPANTE, POWER RESERVE INDICATION  
Mechanical manufacture movement with manual winding, DR 8300 caliber entirely decorated by hand with perlage, côtes de Genève and anglage finishing. Power reserve of 48 hours.



## **DANIEL ROTH TOURBILLON RATTRAPANTE**

Case in 18-kt pink gold, 46 mm, with transparent case back. Multi-layer lacquered dial with satinés treatments and power reserve indication. Alligator strap with 18-kt pink gold folding buckle. BRRP46C14GLTBRA



## PAPILLON



The *papillon* ('butterfly' in French) system refers to the uniquely beautiful minutes display of the watch hands. The patented device, entirely handcrafted and developed in-house at Bulgari, is far more sophisticated than one might first perceive. Instead of a traditional retrograde minute display, the two wing-shaped hands pivot while positioned at a 180° angle – like planets orbiting the sun. Circling in the same direction on a single axis, the hands take turns displaying the minutes – when they reach the 60-minute mark, they 'flutter', quickly switching positions.







**DANIEL ROTH PAPILLON VOYAGEUR**

Case in 18-kt pink gold, 46 mm, with transparent case back. Two-layer dial with vertical brushed black gold and white lacquer. Alligator strap with 18-kt pink gold folding buckle. Limited edition of 99 pieces with collector number engraved on the back case. BRRP46CI4GLGMTP



**DANIEL ROTH  
PAPILLON VOYAGEUR**

Today's jet set skips between continents and juggles with time differences. With such a perpetually shifting perception of time, they need speed and mobility on their side. The new *Bulgari Papillon Voyageur* provides an original solution for globetrotters, combining an exclusive *Haute Horlogerie* creation with an instrument to find their temporal bearings, anywhere on the planet.



**DR 1307 CALIBER**  
**JUMPING HOURS, PAPILLON MINUTE SYSTEM AND CENTRAL GMT DISPLAY**  
Mechanical manufacture movement with automatic winding, DR 1307 caliber decorated with perlage, côtes de Genève and anglage finishing. Jumping hours, patented double-hand papillon minute system, central second time zone. Power reserve of 45 hours.





# **DANIEL ROTH GRANDE LUNE**

This creation follows the movements in the sky in their most majestic form, tracking the phases of the moon. Positioned in the celestial vault at the center of the dial, the moon, coated with finest gold, appears through an asymmetrical opening partly concealed by the circular seconds counter. This latter display consists of a dial with three linked hands, each of differing lengths, turning on a single axis to respectively cover three 20-second segments.



**DR 2300 CALIBER**  
ASTRONOMICAL MOONPHASE, THREE ARMS SMALL SECOND HAND AND DATE  
Mechanical manufacture movement with manual winding and date, DR 2300 caliber decorated with perlage, côtes de Genève and anglage finishing. Central moonphase display. Power reserve of 40 hours.



## **DANIEL ROTH GRANDE LUNE**

Case in 18-kt pink gold, 46 mm, with transparent case back. Two-layer dial with vertical brushed black gold and white lacquer. Hand-applied indexes. Alligator strap with 18-kt pink gold ardillon buckle. BRRP46C14GLDMP



**DANIEL ROTH PETITE SECONDE**

Case in 18-kt pink gold, 44 mm, with transparent case back. Two-layer dial with vertical brushed black gold and white lacquer. Hand-applied indexes. Alligator strap with 18-kt pink gold ardillon buckle. BRRP44C14GLPS



**DANIEL ROTH  
PETITE SECONDE**

This emblematic model is equipped with an ultra-thin mechanical movement of the *Lépine* type, decorated in keeping with the pillars of the *Haute Horlogerie* tradition. The signature double ellipse case of this Daniel Roth creation measures only 7 millimeters high and is made in accordance with the highest horological standards for a subtle union of watchmaking tradition and Latin elegance.



**DR 206 CALIBER**  
**THREE ARMS SMALL SECOND HAND**  
Mechanical manufacture movement with manual winding, DR 206 caliber decorated with perlage, côtes de Genève and anglage finishing. Power reserve of 43 hours.





Eight bracelet-watches  
of the 1970s, variations  
of the snake bracelet motif



## HISTORY OF LADIES' WATCHES

Bulgari ladies' watches recount a history of gracious elegance. First launched in the 1920s, the watches exquisitely combined Art Deco trends with Bulgari's first custom-made pieces. In the 1940s, wristwatches assumed the sinuous form of a snake in a reinterpretation of jewelry traditions dating to Hellenistic and Roman times. Born of a timeless symbol, the first *Serpenti* models featured a flexible body of gleaming yellow gold, with the head and tail set with brilliant diamonds. The precious snakes to follow featured scales of gemstones or polychrome enamel, while others were coiled with the supple *Tubogas* technique, a Bulgari hallmark. The firstborn *Serpenti* soon generated new versions, and today the collection has grown to become a Bulgari icon.

Color is often one of the most distinctive features of a Bulgari creation, evident in the sparkling eyes of *Serpenti* or the boldly hued bracelets of red carpet celebrities. Bulgari is the undisputed master of colored gemstones, esteemed artisans of quality, cut and gemstone design. Indeed, Bulgari was one of the first to ever use color in high jewelry design. Beyond its vast experience, Bulgari is known for its innovation with color, employing gemstones and unusual materials that have literally never been seen before. Developing this bold and unprecedented style, Bulgari has explored uncommon color combinations of semi-precious and precious stones, and invented the gemstone rainbow.





The rainbow shines through all Bulgari collections, but perhaps most charmingly in *Serpenti*. In the 1960s, the glamour of the collection won the heart of illustrious Elizabeth Taylor, who became a passionate and lifelong collector of Bulgari. In fact, she was famously photographed on the set of ‘Cleopatra’ wearing a prestigious *Serpenti* timepiece. In the 1980s, Bulgari’s watches began including precious bracelets made to coil seductively around the wrist. The millennium launched another icon of modern Bulgari design, the B.zero1 jewelry and watch collections that continue to evolve every year with unusual and playful materials such as marble and ceramic. In 2006, Bulgari launched *Cerchi*, a celestially-themed timepiece studded with diamonds and colored stones. 2013 saw the introduction of the *Berries* Collection, a line of opulent timepieces that combine Bulgari’s *savoir-faire* in high jewelry and *Haute Horlogerie*. Furthering this jewelled inspiration, Bulgari’s *Catene* watch is an exquisitely linked bracelet-watch in precious pink gold, sentimentally reminiscent of the classic nameplate bracelet. 2014 casts a new light on Bulgari jewelry watches with LVCEA, gleaming with diamond-studded hours and a cabochon-cut gem crown. And of course, the “Bulgari Bulgari” and *Diagono* collections for men are accompanied by ever-evolving versions for women, keeping time with feminine grace.









## THE COLOR OF TIME

Legends are born to live forever – as stories retold, as relics passed on. The brilliant creations of the Bulgari jewelry watches collection can claim this eternal beauty, as they burst with color, creativity and the mystery of myth. Each jewel watch has its own story to tell, exquisitely recounted on a woman's wrist.

Combining Bulgari's experience in jewelry with its expertise in watchmaking creates twice the masterpiece. Engaging these talents to narrate the stories behind each of its jewelry watches, Bulgari's *Diva* Collection is inspired by the ancient Roman mosaics whose intricate patterns line the surfaces of the beautiful baths built during the reign of Emperor Caracalla in 216 AD. Quintessentially feminine and delicate, *Diva* embodies the daring and colorful style that has fascinated many Hollywood stars such as Elizabeth Taylor. In further tribute to the ancient architecture of its Greek and Roman heritage, Bulgari designed the MVSA Collection with uncommon gemstones in exceptional shapes and volumes that suggest columns, domes or light in a magnificent play of contours. The brilliant tradition of jewelry watches also includes *Cerchi* – the celestially-themed timepiece studded with diamonds and colored stones, and *Berries* – the colorful timepiece that combines Bulgari's *savoir-faire* in high jewelry and *Haute Horlogerie*. Each piece from the jewelry watch collections is like a beautiful novel, expressed with vivid color, sumptuous volume and resounding passion.







#### **DIVA**

Quartz movement. Case in 18-kt pink gold, 39 mm, set with amethysts, rubellite and peridot beads and brilliant-cut diamonds. White mother-of-pearl dial. Satin strap with 18-kt pink gold folding clasp set with brilliant-cut diamonds. DVP39WGD1ARPL

Quartz movement. Case in 18-kt pink gold, 39 mm, set with brilliant and round-cut diamonds, round-cut rubellite and mother-of-pearl. White mother-of-pearl dial. Satin strap with 18-kt pink gold folding clasp set with brilliant-cut diamonds. DVP39WGD1MOPRL

Next page: Quartz movement. Case in 18-kt pink gold, 39 mm, set with turquoises, brilliant-cut diamonds, round-cut diamonds and pink tourmaline. Dial with snow-set diamond pavé. Bracelet in 18-kt pink gold set with turquoises and brilliant-cut diamonds. DVP39D2GD2GD1TUT







#### **MVSA**

Quartz movement. Case in 18-kt white gold, 37 mm, set with brilliant-cut diamonds and buff-cut amethysts and sapphires. Dial with snow-set diamond pavé. Links in 18-kt white gold set with brilliant-cut diamonds, buff-cut sapphires and cabochon-cut amethysts. Strap with 18-kt white gold ardillon buckle set with brilliant-cut diamonds. MUW37D2GD1ASL

Quartz movement. Case in 18-kt pink gold, 37 mm, set with brilliant-cut diamonds, buff-cut amethysts and fancy-cut turquoises. White mother-of-pearl dial. Links in 18-kt pink gold set with brilliant-cut diamonds, turquoise elements and cabochon-cut amethysts. Strap with 18-kt pink gold ardillon buckle set with brilliant-cut diamonds. MUP37WGD1ATL

#### **GEMMA**

Previous page: Quartz movement. Case in 18-kt pink gold, 30 mm, set with buff-cut tourmalines, brilliant-cut diamonds and white mother-of-pearl elements. White mother-of-pearl dial. Bracelet in 18-kt pink gold set with tourmalines, amethysts and rubellite beads, brilliant and round-cut diamonds and white mother-of-pearl elements. GEP30WGD1TARD1



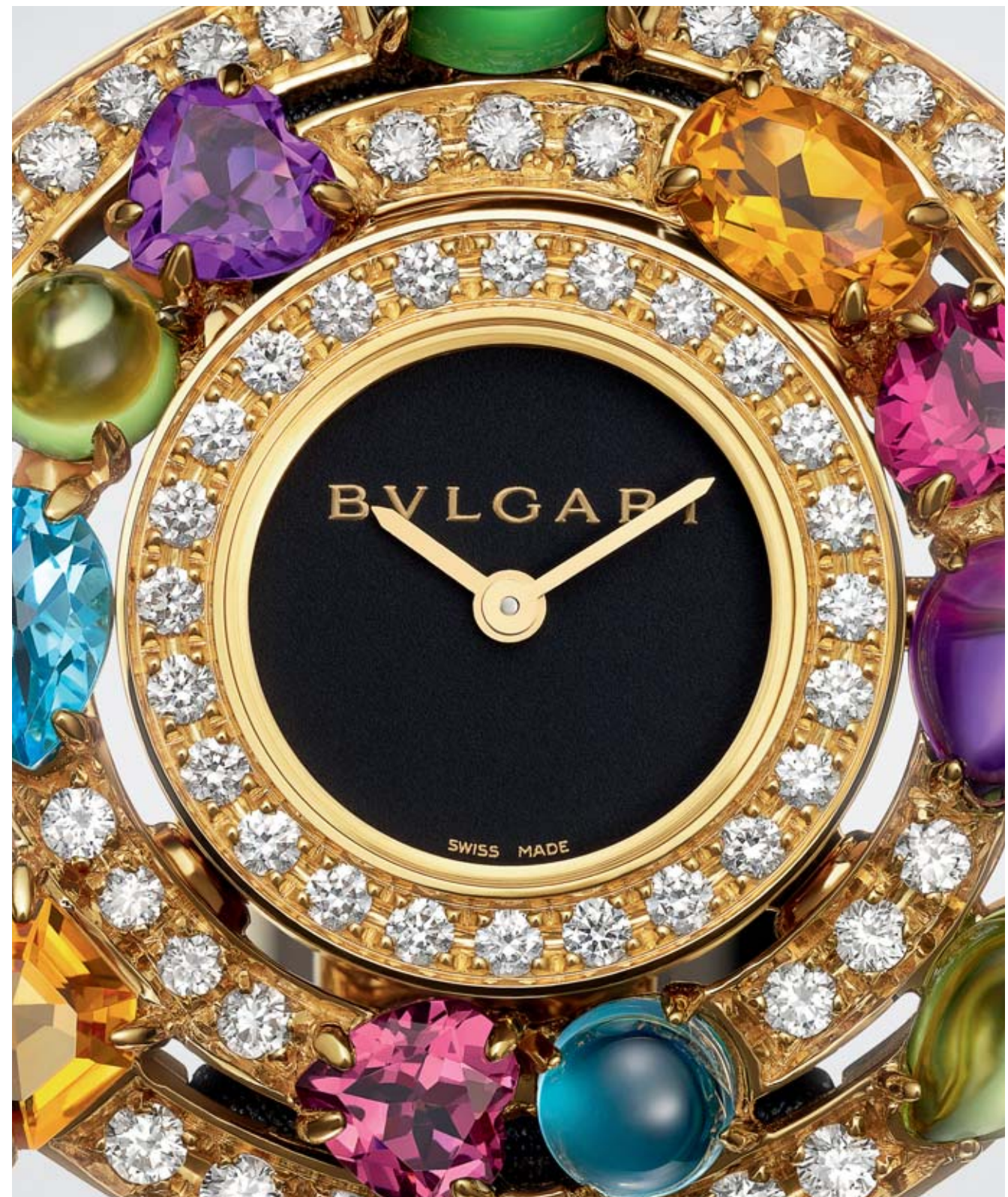


#### CERCHI

Quartz movement. Curved case in 18-kt white gold, 36 mm, set with brilliant-cut diamonds and fancy-cut colored gemstones. White mother-of-pearl dial. Satin strap with 18-kt white gold folding clasp. AEW36D2CWL

Quartz movement. Curved case in 18-kt pink gold, 36 mm, set with brilliant-cut diamonds and fancy-cut colored gemstones. White mother-of-pearl dial. Satin strap with 18-kt pink gold folding clasp. AEP36D2CWL

Next page: Quartz movement. Curved case in 18-kt yellow gold, 36 mm, set with brilliant-cut diamonds and fancy-cut colored gemstones. Black dial. Satin strap with 18-kt yellow gold folding clasp. AE36D2CBL







#### BERRIES

**Previous page: Tourbillon with sapphire bridge and retrograde hours (240°)**

Mechanical manufacture movement with automatic winding. BVL 313 caliber, oscillating mass set with brilliant-cut diamonds. Case in 18-kt white gold, 40 mm, set with brilliant-cut diamonds and emeralds. White mother-of-pearl with serigraphy dial. Alligator strap with 18-kt white gold folding clasp set with brilliant-cut diamonds. BEW40WGD2LETB

**Jumping hour and retrograde minutes (180°)**

Mechanical manufacture movement with automatic winding. Case in 18-kt pink gold, 40 mm, set with brilliant-cut diamonds, sapphires, emeralds, rubies, and colored gemstones. White mother-of-pearl dial marquetry set with diamond indexes. Satin strap with 18-kt pink gold folding clasp set with brilliant-cut diamonds. BEP40WGD2LR

**Tourbillon with sapphire bridge and retrograde hours (240°)**

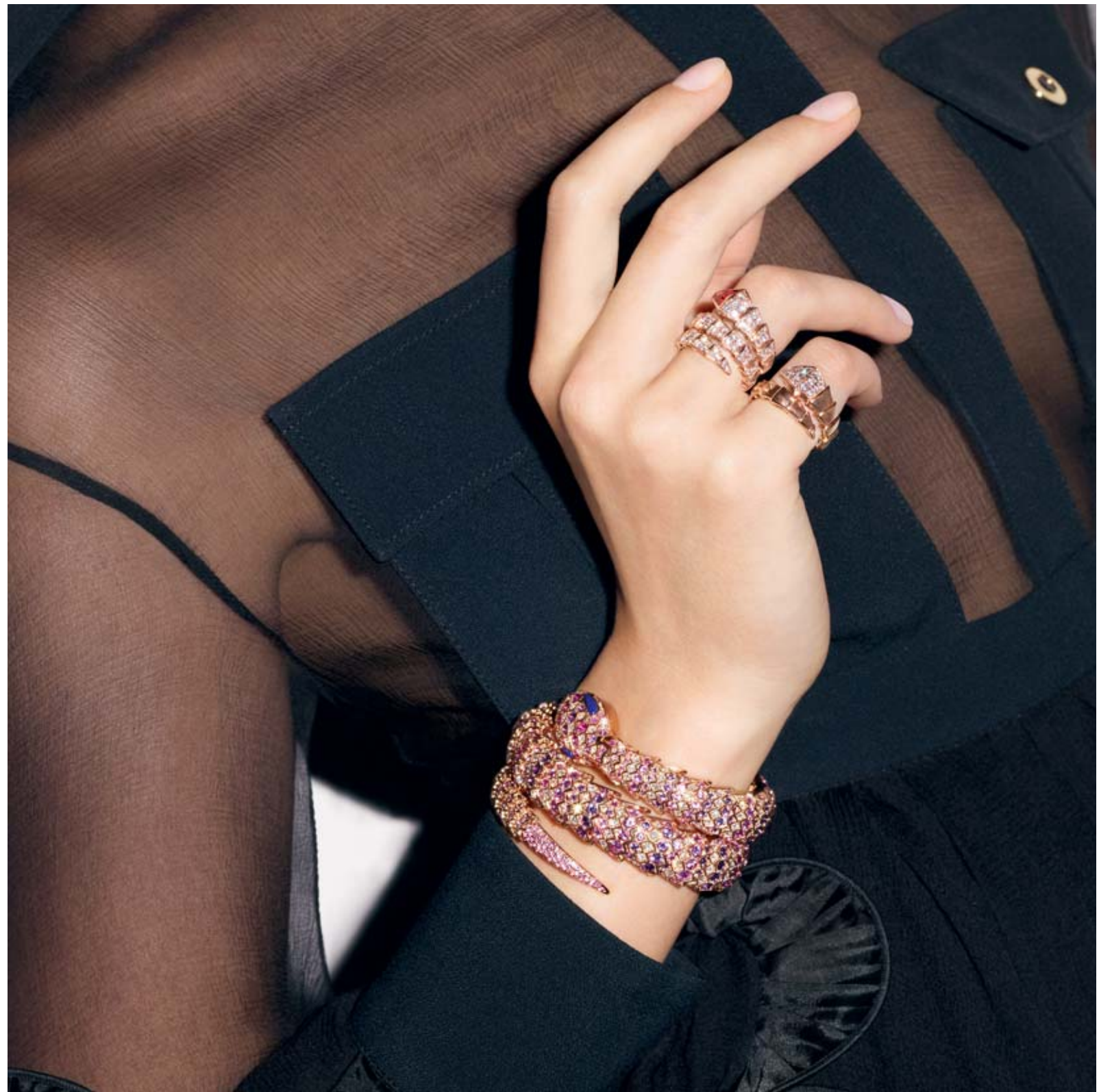
Mechanical manufacture movement with automatic winding. BVL 313 caliber, oscillating mass set with brilliant-cut diamonds. Case in 18-kt white gold, 40 mm, set with brilliant-cut diamonds and rubies. White mother-of-pearl with serigraphy dial. Alligator strap with 18-kt white gold folding clasp set with brilliant-cut diamonds. BEW40WGD2LRTB



## SERPENTI COLLECTION

Bulgari and women, a longstanding romance, began with the founding of the brand. This love affair, as passionate today as it was 130 years ago, has produced breathtaking creations and lifelong obsessions. Perhaps more than any other, Bulgari has won the hearts of women through the *Serpenti* Collection. Whether interpreted in a realistic or geometrically abstract manner, the serpent encompasses all of the most iconic Bulgari hallmarks: a love for color, the juxtaposition of unusual materials, a supple wearability, and innovative artisanal techniques.

Coiled around the history of humanity, the serpent is a seductive symbol dating back to ancient Greek and Roman mythology. Representing wisdom, vitality and the circle of life, the serpent has transcended centuries, traditions and cultures to become the emblem of beauty and strength. Adorning Aphrodite, the goddess of love, held by Asclepius, the Greek god of medicine, the snake's power is undeniably linked with humanity. The history of civilization is intertwined with this emblem – indeed, Queen Victoria herself was seduced by it in the 19<sup>th</sup> century, for her engagement ring was in the shape of a serpent. But perhaps no leader is more closely associated with the serpent than Cleopatra, whose powers flowed through it and whose royal décor was a veritable ode to the sinuous snake. The motif is equally powerful in our own day, as demonstrated by the enormous success of Bulgari's *Serpenti* Collection.











#### SERPENTI HIGH JEWELRY

Previous page: Quartz movement. Case in 18-kt pink gold, 40 mm, dial and double-spiral bracelet set with brilliant-cut diamonds and coral. Eyes in coral. SPP40D2GD2C.2T

Quartz movement. Case in 18-kt white gold, 40 mm, dial and double-spiral bracelet set with brilliant-cut diamonds and emeralds. Eyes in malachite. SPW40D2GD2E.2T



#### SERPENTI HIGH JEWELRY

Quartz movement. Curved case, 40 mm, and dial in 18-kt white gold set with brilliant-cut diamonds, marquise-cut diamonds. Bracelet in 18-kt yellow gold set with brilliant-cut diamonds. Eyes in ruby. SP40D1WGD2RYGD1





#### SERPENTI

Quartz movement. Curved case in 18-kt pink gold, 26 mm, set with brilliant-cut diamonds. Black sapphire crystal dial set with diamond indexes. Single-spiral 18-kt pink gold bracelet set with brilliant-cut diamonds and black onyx. SPP26BGD1GD1O.1T

Quartz movement. Curved case in 18-kt white gold, 26 mm, set with brilliant-cut diamonds. White mother-of-pearl dial set with diamond indexes. Double-spiral 18-kt white gold bracelet set with brilliant-cut diamonds. SPW26WGD1GD2.2T



#### SERPENTI

Quartz movement. Curved case in 18-kt pink gold, 26 mm, set with brilliant-cut diamonds. White mother-of-pearl dial set with diamond indexes. Single-spiral 18-kt pink gold bracelet set with brilliant-cut diamonds and white mother-of-pearl. SPP26WGD1GD1W.1T

Quartz movement. Curved case in 18-kt white gold, 26 mm, set with brilliant-cut diamonds. Black sapphire crystal dial set with diamond indexes. Double-spiral 18-kt white gold bracelet set with brilliant-cut diamonds and black onyx. SPW26BGD1GD1O.2T



One of the fullest expressions of Bulgari charisma, *Serpenti* watches demonstrate the power, elegance and refinement of the snake. Often coiled with another distinctive Bulgari hallmark, the lithe bodies of *Serpenti* are a natural match for the supple *Tubogas* technique. Spiralling with singularity, *Serpenti* watches capture the distinctive allure of the Bulgari woman in a coiled embrace of confidence.











## SERPENTI

Previous page: Quartz movement. Curved case in 18-kt pink gold, 35 mm, set with brilliant-cut diamonds. Crown in 18-kt pink gold set with a cabochon-cut pink rubellite. Black opaline dial with guilloché soleil treatment and hand-applied indexes. Double-spiral 18-kt pink gold bracelet. SPP35BGDG.2T

Quartz movement. Curved case in 18-kt pink gold, 35 mm, set with brilliant-cut diamonds. Crown in 18-kt pink gold set with a cabochon-cut pink rubellite. Dial in 18-kt pink gold set with full pavé brilliant-cut diamonds and hand-applied indexes. Double-spiral 18-kt pink gold bracelet. SPP35D2GDG.2T

Quartz movement. Curved case in 18-kt pink gold, 35 mm, set with brilliant-cut diamonds. Crown in 18-kt pink gold set with a cabochon-cut pink rubellite. Black opaline dial with guilloché soleil treatment and hand-applied indexes. Single-spiral 18-kt pink gold bracelet. SPP35BGDG.1T



## SERPENTI

Quartz movement. Curved case in 18-kt yellow gold, 35 mm, set with brilliant-cut diamonds. Crown in 18-kt yellow gold set with a cabochon-cut pink rubellite. Silver opaline dial with guilloché soleil treatment and hand-applied indexes. Double-spiral 18-kt yellow gold bracelet. SP35C6GDG.2T





#### SERPENTI

Quartz movement. Curved steel case, 35 mm, with 18-kt pink gold bezel. Crown in 18-kt pink gold set with a cabochon-cut pink rubellite. Silver opaline dial with guilloché soleil treatment and hand-applied indexes. Double-spiral 18-kt pink gold and steel bracelet. SP35C6SPG.2T

Quartz movement. Curved steel case, 35 mm, with 18-kt pink gold bezel set with brilliant-cut diamonds. Crown in 18-kt pink gold set with a cabochon-cut pink rubellite. Black opaline dial with guilloché soleil treatment and hand-applied indexes. Single-spiral 18-kt pink gold and steel bracelet. SP35BSPGD.IT



#### SERPENTI

Quartz movement. Curved steel case, 35 mm, set with brilliant-cut diamonds. Steel crown set with a cabochon-cut pink rubellite. Silver opaline dial with guilloché soleil treatment and hand-applied indexes. Double-spiral steel bracelet. SP35C6SDS.2T

Quartz movement. Curved steel case, 35 mm. Steel crown set with a cabochon-cut pink rubellite. Silver opaline dial with guilloché soleil treatment and hand-applied indexes. Single-spiral steel bracelet. SP35C6SS.IT





#### **SERPENTI**

Previous page: Quartz movement. Curved case in 18-kt pink gold, 35 mm, set with brilliant-cut diamonds. Crown in 18-kt pink gold set with a cabochon-cut pink rubellite. Black lacquered dial and hand-applied indexes. Double-spiral 18-kt pink gold and black ceramic bracelet set with brilliant-cut diamonds. SPP35BGDBCUDI.2T

Quartz movement. Curved case in 18-kt pink gold, 35 mm, set with brilliant-cut diamonds. Crown in 18-kt pink gold set with a cabochon-cut pink rubellite. White lacquered dial and hand-applied indexes. Single-spiral 18-kt pink gold and white ceramic bracelet set with brilliant-cut diamonds. SPP35WGDWCUDI.1T

Quartz movement. Curved steel case, 35 mm, set with brilliant-cut diamonds. Steel crown set with a cabochon-cut pink rubellite. Black lacquered dial and hand-applied indexes. Single-spiral steel and black ceramic bracelet set with brilliant-cut diamonds. SP35BSDBCUDI.1T



## LVCEA

Enlightening time, Bulgari creates LVCEA. Capturing the radiance of the finest gemstones, Bulgari binds color to precision, and sensuality to strength.

As the unequivocal master of colored stones, Bulgari designs with the full gemstone rainbow. Among the first to ever use color in high jewelry design, color is today one of the most iconic features of Bulgari creations. In the LVCEA Collection, the crown is made from a pink cabochon-cut stone with a brilliant-cut diamond twinkling at its center.

Born in Rome and of Rome, Bulgari is known for producing creations inspired by the Eternal City since 1884. In keeping with this heritage, LVCEA's modern architecture echoes antiquity, recalling the sundial. Solar quadrants, unearthed in Ancient Rome, were mankind's earliest form of timekeeping. As such, selected LVCEA creations mark time with 'sundial' Roman numerals, others with diamonds set by the renowned jeweller.

A timepiece whose name derives from the Italian word luce, meaning 'light', LVCEA shimmers with the eternity of the heavens. Strength merges with sensuality, as the geometrical links of the bracelet coil into the rounded heart of the case. Beauty measures the hours of the sun, and LVCEA glows with the aura of a woman. Available in a range of shades and styles, Bulgari's LVCEA is as luminously feminine as it is unmistakable.







# **LVCEA**

Mechanical movement with automatic winding. Case in 18-kt pink gold, 33 mm, set with brilliant-cut diamonds. Crown in 18-kt pink gold set with a pink cabochon-cut stone and diamond. Black opaline dial with a guilloché soleil treatment set with diamond indexes. Bracelet in 18-kt pink gold set with brilliant-cut diamonds. LUP33BGDGD1D/11







#### LVCEA

Mechanical movement with automatic winding. Case in 18-kt pink gold, 33 mm, set with brilliant-cut diamonds. Crown in 18-kt pink gold set with a pink cabochon-cut stone and diamond. Black opaline dial with a guilloché soleil treatment, gold-plated index and Roman numerals at XII and VI. Bracelet in 18-kt pink gold. LUP33BGDGD

Mechanical movement with automatic winding. Case in 18-kt pink gold, 33 mm. Crown in 18-kt pink gold set with a pink cabochon-cut stone and diamond. White mother-of-pearl dial set with diamond indexes. Bracelet in 18-kt pink gold. LUP33WGGD/11



#### LVCEA

Mechanical movement with automatic winding. Steel case, 33 mm. Crown in 18-kt pink gold set with a pink cabochon-cut stone and diamond. Silver opaline dial with a guilloché soleil treatment, gold-plated index and Roman numerals at XII and VI. Steel and 18-kt pink gold bracelet. LU33C6SSPGD

Mechanical movement with automatic winding. Steel case, 33 mm, with 18-kt pink gold bezel. Crown in 18-kt pink gold set with a pink cabochon-cut stone and diamond. Black opaline dial with a guilloché soleil treatment, gold-plated index and Roman numerals at XII and VI. Steel and 18-kt pink gold bracelet. LU33BSPGSPGD





**LVCEA**

Previous page: Quartz movement. Steel case, 28 mm, with 18-kt pink gold bezel. Crown in 18-kt pink gold set with a pink cabochon-cut stone and diamond. White mother-of-pearl dial set with diamond indexes. Steel and 18-kt pink gold bracelet. LU28WSPGSPG/12

Quartz movement. Steel case, 28 mm. Steel crown set with a pink cabochon-cut stone and diamond. Silver opaline dial with a guilloché soleil treatment, rhodium-plated index and Roman numerals at XII and VI. Steel bracelet. LU28C6SSD

Mechanical movement with automatic winding. Steel case, 33 mm. Steel crown set with a pink cabochon-cut stone and diamond. White mother-of-pearl dial set with diamond indexes. Steel bracelet. LU33WSSD/11



## BVLGARI BVLGARI COLLECTION

In 1977, Bulgari launched its first watch, with an emblematic signature that foreshadowed an extraordinary destiny. With a bezel bearing the double brand logo, the original “*Bulgari Bulgari*” watch made an historic debut and became the archetype for generations of watches to come.

From this iconic piece Bulgari created the “*Bulgari Bulgari*” *Catene*, a precious 18-kt pink gold creation. Links of pink gold form the delicate band of the sophisticated timepiece, inspired by the historically classic *gourmette*. The vintage *gourmette*, French for “nameplate bracelet,” has been reinterpreted by Bulgari and restored to its former familiarity. Known to grace the wrists of goddesses such as Elizabeth Taylor, Anna Magnani and Grace Kelly, the simple *gourmette* of yesteryear becomes the *Catene* of today. This timelessly sentimental symbol is now customized as a wrap-around bracelet watch with a suppleness attributable to its sophisticated construction. The apparent simplicity of the timepiece’s smooth elegance does not reveal its complex construction, as the *savoir-faire* of Bulgari gold-smithing creates a bracelet that twice encircles the wrist.

For 2014, the *Catene* has been reintroduced with a single precious band for everyday wear. For more formal occasions, special limited editions join the collection with insets of coral, onyx or mother-of-pearl.

Known for taking inspiration from its own history, Bulgari delights in the vintage spirit of this classically playful accessory. With the venerable double logo engraved on its bezel, the *Catene* watch is accentuated by brilliant-cut diamond accents and the luminosity of its delicate dial. A charming addition to the “*Bulgari Bulgari*” Collection for women, *Catene* is as precious as it is timely.







#### **BVLGARI BVLGARI CATENE**

Previous page: Quartz movement. Case in 18-kt pink gold, 31 mm. Crown in 18-kt pink gold set with a cabochon-cut pink rubellite. White mother-of-pearl dial set with diamond indexes. Double-twirl 18-kt pink gold gourmette bracelet set with brilliant-cut diamonds. Folding clasp in 18-kt pink gold. BBP31WGGD1.2T/12

Quartz movement. Case in 18-kt pink gold, 31 mm. Crown in 18-kt pink gold set with a cabochon-cut pink rubellite. White mother-of-pearl dial set with diamond indexes. Double-twirl 18-kt pink gold gourmette bracelet. Folding clasp in 18-kt pink gold. BBP31WGG.2T/12





#### **BVLGARI BVLGARI CATENE**

Quartz movement. Case in 18-kt pink gold, 31 mm, set with brilliant-cut diamonds. Crown in 18-kt pink gold set with coral, carnelian stone dial set with diamond indexes. Single-twirl 18-kt pink gold gourmette bracelet set with coral. Folding clasp in 18-kt pink gold. BBP31C8GDGCO.1T/12

Quartz movement. Case in 18-kt pink gold, 31 mm, set with brilliant-cut diamonds. Crown in 18-kt pink gold set with a cabochon-cut pink rubellite. White mother-of-pearl dial set with diamond indexes. Single-twirl 18-kt pink gold gourmette bracelet set with brilliant-cut diamonds. Folding clasp in 18-kt pink gold. BBP31WGDGDI.1T/12

Next page: Quartz movement. Case in 18-kt pink gold, 31 mm, set with brilliant-cut diamonds. Crown in 18-kt pink gold set with an onyx. Black lacquered dial set with diamond indexes. Double-twirl 18-kt pink gold gourmette bracelet set with black onyx and brilliant-cut diamonds. BBP31BGDO.2T/12





## BVLGARI BVLGARI IL GIARDINO MARINO

Bulgari is proud to introduce its limited edition *Grandes Complications Tourbillon* watch for women, a luxurious masterpiece of color and unparalleled craftsmanship. Inspired by the luxuriance of nature and the vivid colors that brighten our world, 2014's "Bulgari Bulgari" *Il Giardino Marino*, meaning 'marine garden', pays tribute to the sea. Swimming with precious stones, coral, turquoise and mother-of-pearl, only 50 pieces will be made of the exclusive "Bulgari Bulgari" *Il Giardino Marino*, a jewelry watch as rich and opulent as the Italian seashore.

Submerged beneath a blue lacquered *champlevé* dial, the timepiece sparkles with 29 brilliant-cut diamonds atop its surface. With meticulous dedication, the "Bulgari Bulgari" *Il Giardino Marino* is the epitome of Bulgari's skills as both jeweller and watchmaker: it takes three weeks to handcraft just one of the dials that floats above its masterful *tourbillon* movement. The ocean life of this 'marine garden' collection brims with beauty and Bulgari inspiration.







**BVLGARI BVLGARI IL GIARDINO MARINO**

**Previous page: Tourbillon with sapphire bridge and champlevé dial with marquetry**

Mechanical manufacture movement with automatic winding, BVL 263 caliber with see-through tourbillon and sapphire bridge. Power reserve of 64 hours. Case in 18-kt pink gold, 37 mm, set with brilliant-cut diamonds. Crown in 18-kt pink gold set with a cabochon-cut rubellite. Blue lacquered dial with fish motif of turquoise, coral, mother-of-pearl and set with brilliant-cut diamonds. Alligator strap with 18-kt pink gold ardillon buckle. BBLP37FDGDLTB

**BVLGARI BVLGARI IL GIARDINO TROPICALE**

**Tourbillon with sapphire bridge and hand-painted dial**

Mechanical manufacture movement with automatic winding, BVL 263 caliber with see-through tourbillon and sapphire bridge. Power reserve of 64 hours. Case in 18-kt pink gold, 37 mm, set with brilliant-cut diamonds. Crown in 18-kt pink gold set with a cabochon-cut rubellite. Ivory lacquered dial with parrot, flower and leaf motifs set with brilliant-cut diamonds. Alligator strap with 18-kt pink gold ardillon buckle. BBLP37PDGDLTB

**BVLGARI BVLGARI IL GIARDINO MARINO**

**Next page: Tourbillon with sapphire bridge and champlevé dial with marquetry**

Mechanical manufacture movement with automatic winding, BVL 263 caliber with see-through tourbillon and sapphire bridge. Power reserve of 64 hours. Case in 18-kt pink gold, 37 mm. Crown in 18-kt pink gold set with a cabochon-cut rubellite. Blue lacquered dial with fish motif of turquoise, coral and mother-of-pearl and set with brilliant-cut diamonds. Alligator strap with 18-kt pink gold ardillon buckle. BBLP37FDGDLTB







**BVLGARI BVLGARI**

Previous page: Mechanical movement with automatic winding. Steel case, 33 mm, with 18-kt pink gold bezel. White mother-of-pearl dial set with diamond indexes. Steel and 18-kt pink gold bracelet. Medium model. BBL33WSPG/12

Mechanical movement with automatic winding. Case in 18-kt pink gold, 33 mm. White mother-of-pearl dial set with diamond indexes. Beige alligator strap with 18-kt pink gold ardillon buckle. Medium model. BBLP33WGL/12

Mechanical movement with automatic winding. Case in 18-kt pink gold, 33 mm, set with brilliant-cut diamonds. White mother-of-pearl dial set with diamond indexes. White alligator strap with 18-kt pink gold ardillon buckle. Medium model. BBLP33WGDL/12





#### **BVLGARI BVLGARI**

Mechanical movement with automatic winding. Steel case, 33 mm, with 18-kt pink gold bezel. Brown soleil lacquered dial set with diamond indexes. Steel and 18-kt pink gold bracelet. Medium model. BBL33C11SPG/12

Mechanical movement with automatic winding. Steel case, 33 mm, with 18-kt pink gold bezel. White lacquered dial with gold-plated indexes and Roman numerals at XII and VI. Steel and 18-kt pink gold bracelet. Medium model. BBL33WSPGD



#### **BVLGARI BVLGARI**

Quartz movement. Steel case, 26 mm. Black lacquered dial with rhodium-plated indexes and Roman numerals at XII and VI. Steel bracelet. Small model. BBL26BSSD

Mechanical movement with automatic winding. Steel case, 37 mm. White mother-of-pearl dial set with diamond indexes. Beige alligator strap with steel ardillon buckle. Large model. BBL37WSL/12





#### **BVLGARI BVLGARI TUBOGAS**

Quartz movement. Steel case, 26 mm, with 18-kt pink gold bezel. White mother-of-pearl dial set with diamond indexes. Steel and 18-kt pink gold tubogas bracelet. Medium size. BBL262TWSPG/12.M

Quartz movement. Steel case, 26 mm. Black lacquered dial with rhodium-plated indexes and Roman numerals at XII and VI. Steel tubogas bracelet. Medium size. BBL262TBSS.M



#### **BVLGARI BVLGARI TUBOGAS**

Quartz movement. Case in 18-kt pink gold, 19 mm. Black lacquered dial set with diamond indexes. Tubogas bracelet in 18-kt pink gold. Small size. BBLP191TBGG/12

Quartz movement. Case in 18-kt pink gold, 26 mm. Black lacquered dial set with diamond indexes. Tubogas bracelet in 18-kt pink gold. Medium size. BBLP262TBGG/12.M





**B.ZERO1**

Previous page: Quartz movement. Steel and 18-kt pink gold case, 23 mm, with 18-kt pink gold bezel and black ceramic ring. Black lacquered dial set with diamond indexes. Black ceramic bangle. Medium size. BZ23BSGCC/12.M

Quartz movement. Steel case, 23 mm, with black ceramic ring. Black lacquered dial. Black calfskin bracelet. BZ23BSCL

Quartz movement. Steel case, 23 mm, with white ceramic ring. White lacquered dial. White ceramic bangle. Medium size. BZ23WSCC.M



